



BURY GRAMMAR SCHOOL

Bury Grammar School (BGS) is an independent school for pupils aged 3 to 18. Formed in 1570, the coeducational school and Sixth Form is rated Outstanding by Ofsted and supports over 1,200 students.

After providing support for Bury Grammar since 2017 and working with them on other projects, they approached us to create a multi-building sign-in solution with them that would help them control the security of their 25 acre site.

The Challenge

As the Bury Grammar site is split over a number of buildings and across a large site, the school needed a sign-in system that could communicate between multiple entrance points to give a clear view of the people on site at any given time.

Monitoring access over a large site can be problematic. Keeping an up to date fire record in these circumstances is also very difficult. The system would need to cover entrances for both visitors, staff and students. The system would need to be easy for everyone to use, including when using it for reporting in an emergency, or for day-to-day admin.



100%

Compliance with Safeguarding

23%

Uplift in Staff Confidence in Security

286

minutes of Staff Time Saved per Week

6%

Uplift in Positive Parental Perception



The whole site just feels more secure. When we began looking for a solution, we had concerns that our multi-building set-up would make it tricky to find a cost-effective solution.

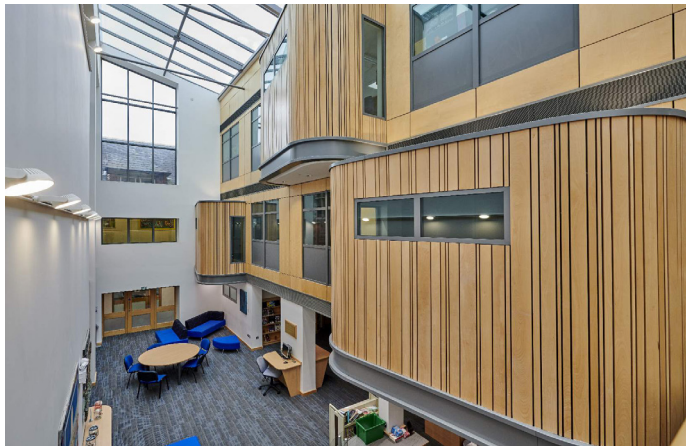
Installing InVentry through Virtue was definitely the right decision, the solution has exceeded our expectations”

- Ben Whitaker, Head of IT Services, Bury Grammar School

The Solution

Based on the needs of Bury Grammar, Virtue supplied InVentry, the market leading school sign-in solution.

We proposed that BGS install multiple InVentry screens, covering all of the schools entrances points. They have the ability to communicate with each other, enabling someone to be able to sign in and sign out in different school locations, which was one of their key requirements.



The Benefits

The primary benefit of Virtue installing InVentry is the creation of a secure, computerised sign-in system which supports safeguarding across Bury Grammar's large school site.

In the event of an emergency, the school's fire evacuation lists are readily accessible in numerous locations on portable devices.

BGS has also benefited from InVentry's ability to provide a read and write integration with iSAMS. It's the only system of its kind with this feature. The iSAMS integration has been of huge benefit to the school, saving them time. It enables them to sign in their late arriving pupils, direct from the system. This alone has saved Bury Grammar's administration staff up to an hour of data entry work a day.

The InVentry system has also given the school the ability to help create a transition for pupils moving from Secondary School to College, preparing them for Higher Education or the world of work. The students can sign in and out themselves once they're in Sixth Form as they enter and leave the site throughout the day. This gives the students themselves a sense of time management and scheduling while being useful for staff when reporting on student attendance.



- A Senior Leadership Objective translated into a Technical Solution
- Safeguarding Compliance for Ofsted & DfE
- Easily Accessible Reporting
- Easy-to-use System for Staff, Students & Visitors
- Improved School, Parental, Staff & Pupil perception
- Measurable Weekly Administration Staff Time Savings